

Annex 3: Proposed stepped footbridge design

1. ALL DIMENSIONS ARE IN MILLIMETRES UNLESS STATED OTHERWISE.

2. DO NOT SCALE FROM THIS DRAWING.

3. HATCHED AREA ON PLAN INDICATES NETWORK RAIL LAND OWNERSHIP.

4. THE DIMENSIONS AND LEVELS SHOWN ON THIS DRAWING ARE BASED UPON ESTIMATES TAKEN FROM SITE AND TOPOGRAPHICAL SURVEY.

5. REPRODUCED FROM THE ORDINANCE SURVEY (AS WITH PERMISSION OF THE CONTROLLER OF HER MAJESTY'S STATIONERY OFFICE, CROWN COPYRIGHT LICENCE No. 91004982).

6. THIS DRAWING SHOULD BE READ IN CONJUNCTION WITH THE LEVEL CROSSING REPORT.

KEY

- NETWORK RAIL BOUNDARY
- AREA OF LAND REQUIRED BY NETWORK RAIL (20m²)

FEASIBILITY

Rev	Date	Description of Revisions	Drawn	Checked	Appr

NetworkRail

Design: Infrastructure Projects
 Buildings & Civils
 Civils Design Group
 Mark
 Mark
 T/01 894 38267
 F/01 0194 38267
 F/01 0194 38267
 F/01 0194 38267

NetworkRail

NATIONAL LEVEL CROSSING CLOSURE PROGRAMME

COPMANTHORPE LEVEL CROSSING FOOTBRIDGE GENERAL ARRANGEMENT

Design	Drawn	Checked	Approved	Issue	Date
A. ROYNTON	P. JAWSON	A. WILLIAMS	T. COBBERS	1	12.02.15

Working at 1:100
 As indicated
 185m x 8m spans

Drawing Title: LNE/143429/EAR/DRG/1AB/001

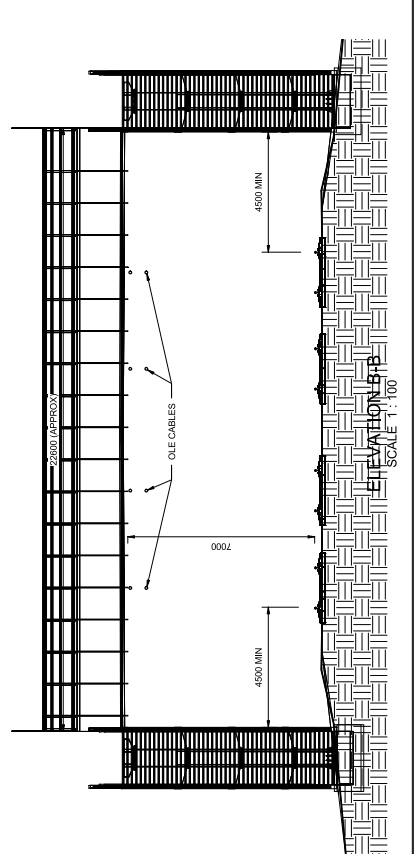
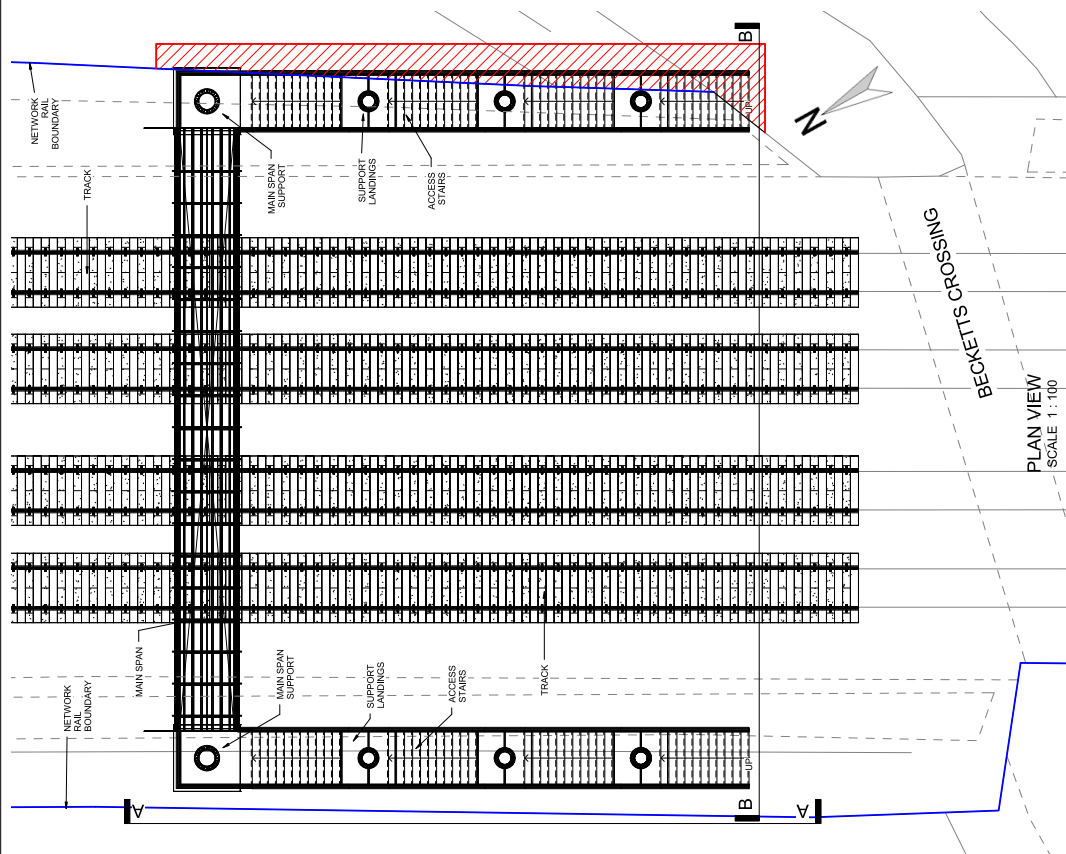
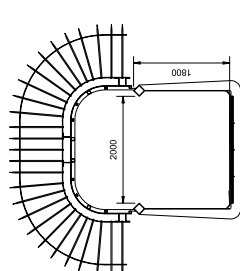
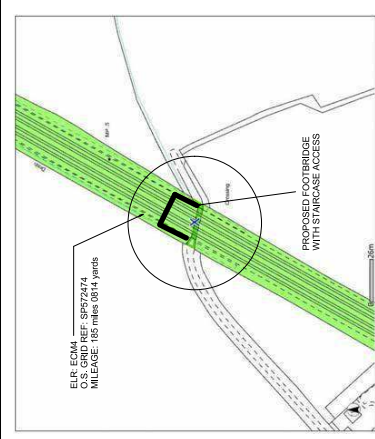


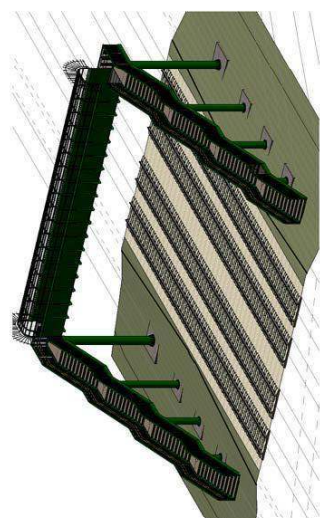
PHOTO 2 -



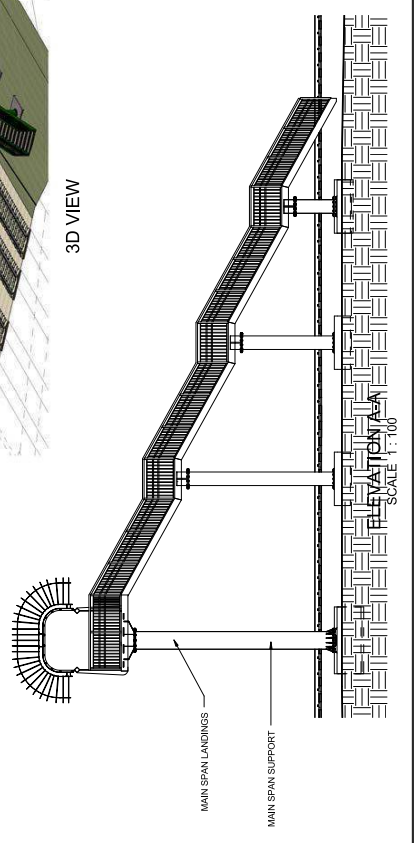
PHOTO 1 -



TYPICAL SECTION THROUGH MAIN SPAN SCALE 1:50



3D VIEW



ELEVATION SCALE 1:100